

Arlington Parade Info Sheet

Date: Sunday - July 29th, 2018

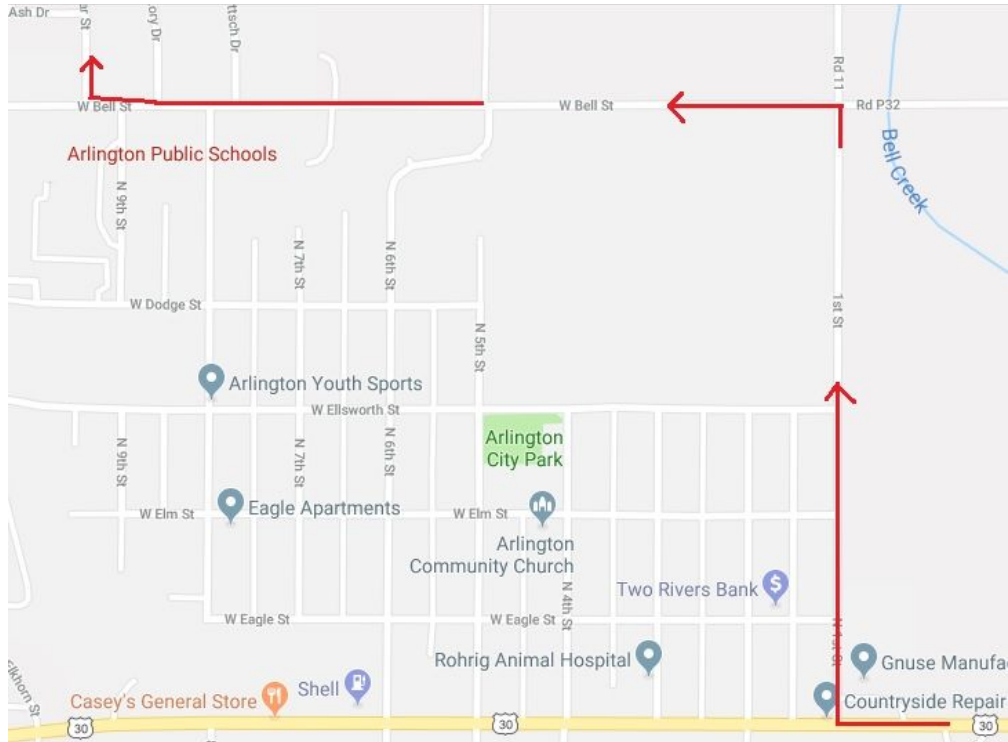
Lineup Time: 3:30pm

Parade Time: 4:30pm

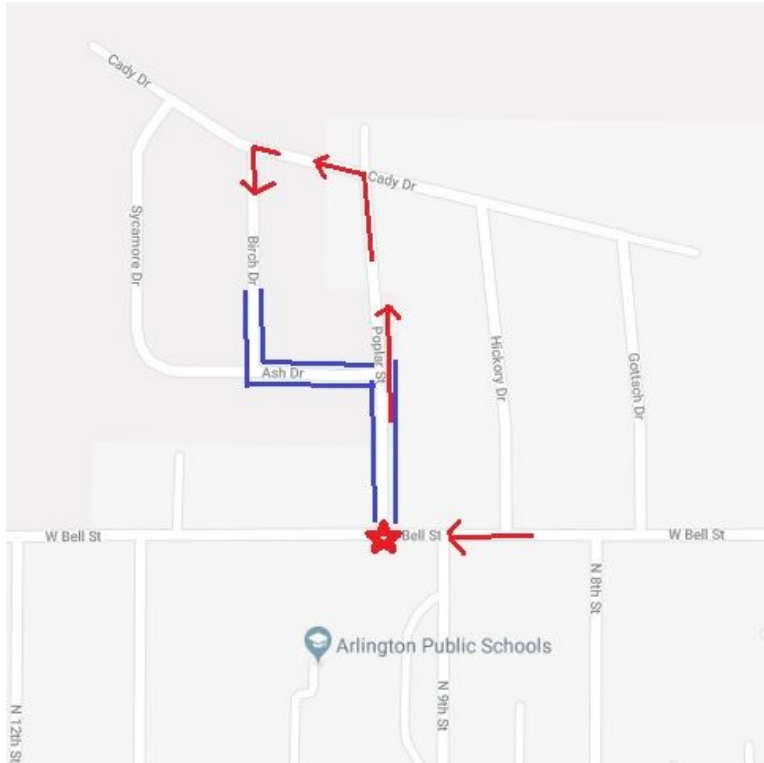
Lineup Location: Poplar St. and W. Bell St

Enter lineup location by turning north on 1st St off of Hwy 30, take a left on W. Bell and continue west until you arrive at Poplar. You can park personal vehicles on the street in the neighborhood.

To Get to Lineup Area:



Lineup Area:



Oasis Location: NO OASIS

Other Info: To get back to your personal vehicles at the end of the parade – The parade will end going east on W. Eagle St., continue straight (east) on W. Eagle until you come to 1st St. Turn left on 1st and go to W. Bell St, turn left and proceed back to Poplar St where our lineup area was.

If you are heading back to Omaha immediately from the parade, you can turn right on 1st St. and left on Hwy 30 which takes you back to Omaha.

NOTE: This is Arlington’s 100th Anniversary, it’s a BIG deal to them, they are really thrilled that we are doing this parade, please let’s get a good turnout for them and show them what Shriner’s do best. Thank You to all who are participating!

Lineup Order:

Legion of Honor

Potentate Band

Jo-De-Ra / Divan

White Hospital Van

Arab Patrol

Motor Scooters/ Marching Unit/Inflatable in truck

Shrine Hospital

Van/Small Yellow cars/Float

Membership

White Pickup Truck

Director's Staff

Limousine/Small Choppers

Motor A

Small Red 57 Chevys/

Yellow Jeep

Greeters Truck

Corvette Club

MO-RI

Shrine Bowl

Bus/Football/Indy Cars/Helmet/Rolling Lounge chairs

Motor B

Vintage Iron

Pickup Truck Club

Mobile Nobles Train

Pirates

Racers

White Race Cars

Arbor Shrine

Antique Fire Truck

Clowns

Red Antique Fire Truck

Keystone Kops

Paddy Wagon Truck

Provost

Golf Cart/Polaris/Harleys